

MODEL 2590

23" Capacity Whole Tree Chipper

Bandit's **most popular whole tree chipper** is the Model 2590. Officially rated as a 23" capacity whole tree chipper, the Model 2590 actually has a 26.25-inch by 30-inch chipper throat opening so it easily handles large whole trees, tops, and logging slash. It features Bandit's **unique Slide Box Feed System**, and is available with a dedicated micro chip drum for biomass applications. Depending on engine options, the Model 2590 can fully load chip vans in 18 to 20 minutes and the average chip van holds 32 to 35 tons a load – without the need for auxiliary chip throwers.

SUPERIOR PRODUCTION

The model 2590 is capable of filling a full length in van in 18-20 minutes, while holding 32 to 35 tons a load. Because of Bandit's powerful feed system and horsepower options. The wide throat opening means more material can be fed, and the standard 7.5' infeed chain quickly conveys material to the infeed.

FULLY PACK TRAILERS

Bandit is known throughout the industry for packing chip trailers fuller and reducing the number of trips to the dump site. And Bandit can do it without the need of horsepower-robbing, fuel chugging chip accelerators.

MAXIMIZE YOUR UPTIME

Bandit chippers are constructed to withstand rigorous chipping every day, all day. We use only the highest quality components and materials during construction to help ensure that your machine will be ready to go to work when you are.

Standard & Custom Colors Available

Choose from two standard colors, or select a custom color to match your fleet.



Bandit Yellow



Green

CONFIDENCE TO KEEP RUNNING

All Bandit Whole Tree Chippers come standard with an industry leading 5-year "GUTS" warranty covering the Bandit fabricated components of the drum and slide box feed system. These components are so durable and rugged Bandit is proud to offer this extended warranty as a standard feature

TOP NOTCH SUPPORT

Whether you are supported by the Bandit factory or a dedicated authorized Bandit dealer, you can be confident that our team of trained professionals have the knowledge and dedication to serve all of your parts, sales and service needs!



Bandit

EMPLOYEE-OWNED

6750 Millbrook Rd. • Remus, MI 49340 • **1-800-952-0178**

FIND US ONLINE



WWW.BANDITCHIPPERS.COM

Hand-Fed Chippers • Stump Grinders • Whole Tree Chippers
The Beast® Horizontal Grinders • Track Carriers • Attachments

All specifications, dimensions and options are subject to change without notice, and were current at the time of printing. Dimensions may vary, depending on options and engines selected. Bandit Industries, Inc. reserves the right to change designs, specifications and options without prior notice. © 2024 Bandit Industries, Inc. All Rights Reserved.

CALL YOUR LOCAL BANDIT SALES REPRESENTATIVE TO SCHEDULE A DEMONSTRATION TODAY!

SPECIFICATIONS

MEASUREMENTS

2590

	3" Pintle	Fifth Wheel
Length:	31' 5"	38' 5"
Width:	10' 2"	9' 11"
Height:	11' 7"	12' 8"
Weight:	42,000 lbs	44,000 lbs.
Engines:	755-800 HP (555-588 kW)	
Fuel Tank:	130 gal.	492 L
Hydraulic Tank:	85 gal.	322 L

AXLES

Towable: (2) air brake axles with (8) 10R 17.5" (44.5 cm) tires mounted on white dual rims

ENGINE OPTION 1

ENGINE OPTION 2

Make and Model: CAT C18	Make and Model: CAT C18
Gross HP: 755 HP (555 kW)	Gross HP: 800 HP (588 kW)
Fan: Reversing	Fan: Reversing
Clutch Type: PT Tech or dry fluid	Clutch Type: PT Tech or dry fluid

DIMENSIONS

Capacity:	23" Capacity	58.4 cm Capacity
Opening:	26.25" tall x 30" wide	66.7 cm x 76.2 cm wide
Drum:	37" dia. x 30" wide	94 cm dia. x 76.2 cm wide
RPM:	Approximately 1,120 RPM	
Chipper Shaft:	6" diameter	15.2 cm diameter
Knives: .625" thick x 5.5" wide x 10" long in (6) Pockets		
Discharge: Stationary swivel with hydraulic deflector		
Feed System: Slide Box with 36" wide x 27" diameter (91.4cmx68.6cm) top feed wheels and 36" wide x 10.625" diameter (91.4 cm x 27 cm) bottom feed wheels		
Frame: .5" x 4" x 12" (1.27 cm x 10.16 cm x 30.48 cm), Rectangular Tubing		

OPTIONAL SUPER SINGLE TIRES



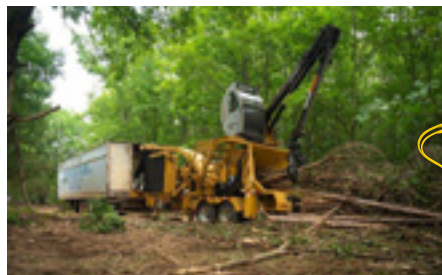
COMMITTED TO QUALITY & PRODUCTIVITY

Since 1983, Bandit has manufactured equipment for a multitude of wood waste processing markets. The vision since the beginning, is to build quality, highly productive, easy to maintain equipment providing years of dependable service.

The commitment for quality, innovation and dedication is instilled in every employee and is one of the main reasons why Bandit became an Employee-Owned Company (ESOP) in 2018. These core values ensure each Bandit machine will leave the factory ready to exceed your expectations.

OPTIONAL CAB & LOADER

Bandit offers an optional cab and loader on the Model 2590 to make this machine the ultimate all-in one machine. Operators have an exceptional view of the action from the cab mounted above the chipper, and intuitive controls help even new operators feel like pros in no time. And when the work is done, these cabs fold down for transport!



WATCH IT RUN!



TEST OUR METAL

When you choose a Bandit whole tree chipper, you'll experience more uniform chip production, smoother and more efficient chipping, long-lasting components and improved fuel economy. We invite you to see for yourself by scheduling a demo with your nearest authorized Bandit dealer.



Bandit Offers a Complete Line of Tree Care Equipment:
Hand-Fed Chippers • Stump Grinders • Whole Tree Chippers
The Beast® Horizontal Grinders • Track Carriers • Attachments